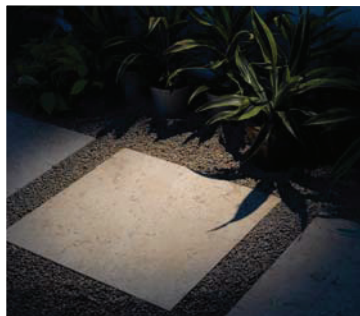


# Lighting Design Tips

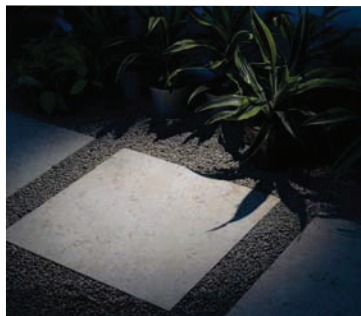
## The color of your light sets the tone.

Did you know that not all white light is created equal? Many of our integrated LED fixtures and LED retrofit lamps come in a variety of color temperatures – from warm white to pure white to cool white – that can enhance the colors in your home’s exterior and landscape. Known as Kelvin (K) temperature, consider these suggestions for placement:



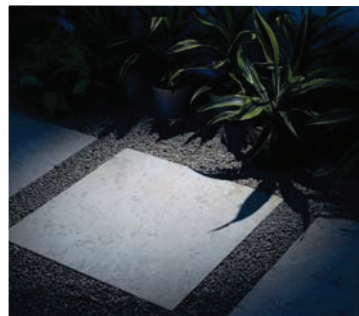
**WARM WHITE - 2700K**

- Surroundings with warmer colors, like brown and cedar
- Natural colored walls or stonework
- Foliage that is red, orange or yellow (ex: highlighting oak trees)



**PURE WHITE - 3000K**

- Surroundings with dark materials, like deep slate, black or grey
- Foliage that is blue or purple (ex: highlighting blue spruce trees)



**BRIGHT WHITE - 4000K-4200K**

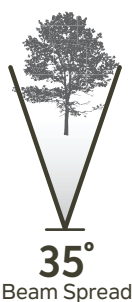
- Ultra contemporary homes and structures
- Commercial applications
- 120V-277V only

## Beam spreads...focus light where it’s needed.

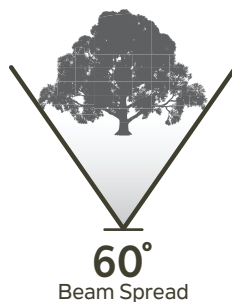
Kichler® integrated LED fixtures are available in a variety of beam spreads that allow your lighting professional to tailor the light to your specific application – creating the perfect end effect you desire.



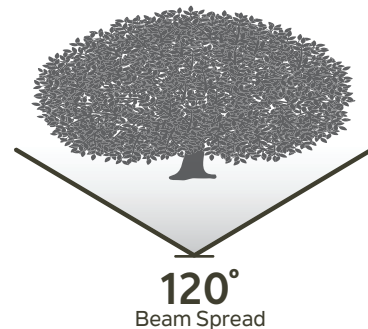
Tall, thin beam of light ideal for grazing trees and column features.



Medium height and width beam of light suited for general accent lighting.



Short and wide beam of light useful for broad trees and wide structures.



Ideal for wall washing, grazing, and short yet wide, objects.